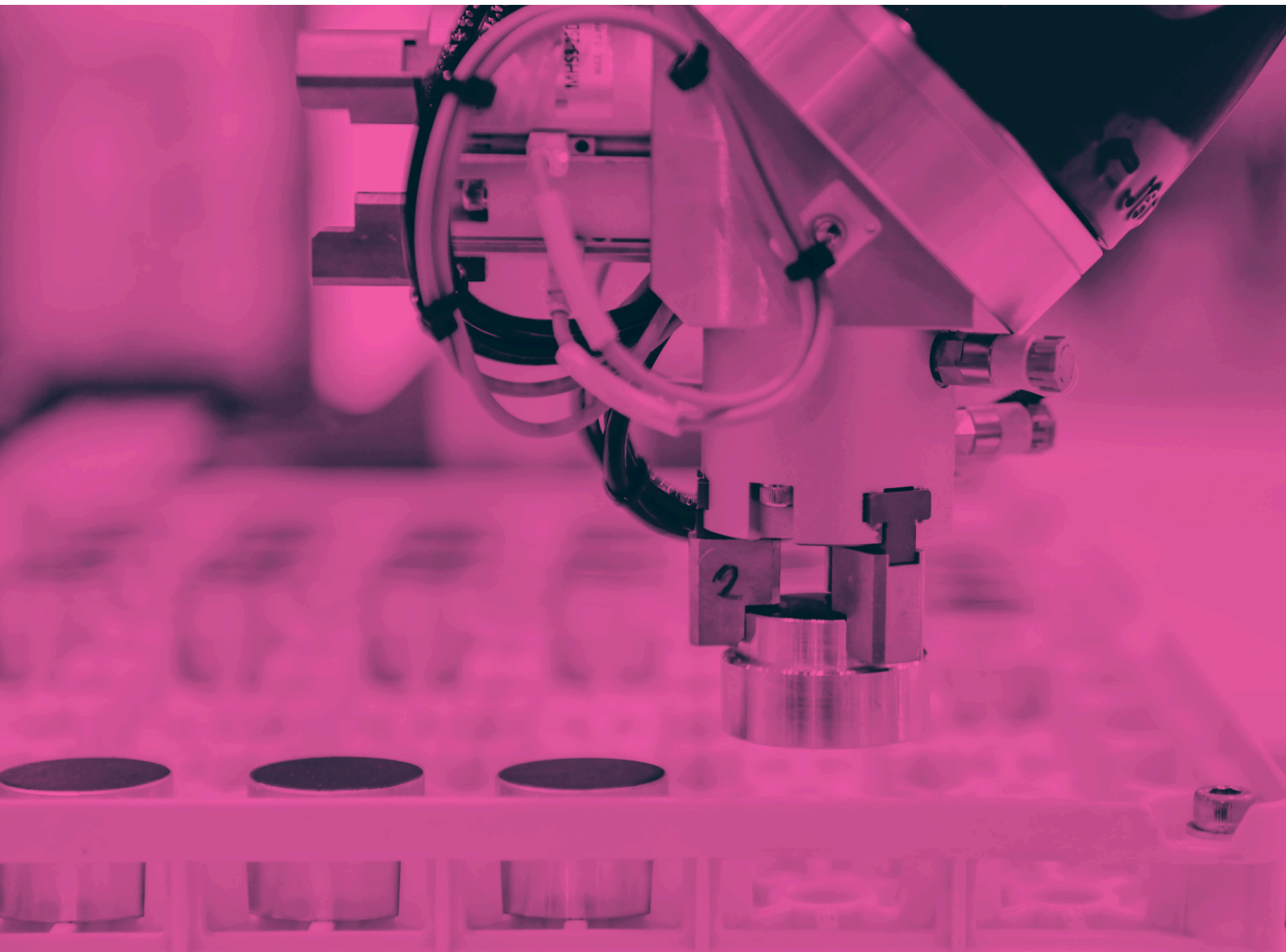




The Connected Care Platform

SIMPLIFYING CONNECTIVITY, SCALING INNOVATION





Accelerated Results

KeborMed and **AROBS** have partnered to deliver cutting-edge connectivity for the next generation of digital health and laboratory systems. The KeborMed platform streamlines the complexities of compliance, connectivity, and scalability, enabling MedTech and laboratory automation companies to accelerate time to market and achieve regulatory assurance.

Implementation is expertly led by **AROBS**, leveraging over 25 years of experience in software development and system integration. With a proven history of delivering customized solutions, **AROBS** ensures seamless deployment and adapts each implementation to meet the unique needs of every client.

[AROBS.COM](https://arobs.com)

Contact:

Email: dorian.ilie@arobs.com

Website: arobs.com

Phone: +40 723 742 706



Key Benefits of the Platform

Seamless Connectivity

Plug-and-play capabilities integrate lab systems with cloud solutions, ensuring real-time data transfer and interoperability.

Regulatory & Quality Excellence

Certified to ISO 13485 and IEC 62304 standards, providing robust QMS and lifecycle safety for lab automation software. FDA 21 CFR Part 11 compliance ensures secure, traceable electronic records - critical for clinical labs.

Strong Security & Privacy

Built on ISO 27001, with HIPAA, GDPR, and CCPA compliance, ensuring protection of sensitive data and patient information.

Customizable Flexibility

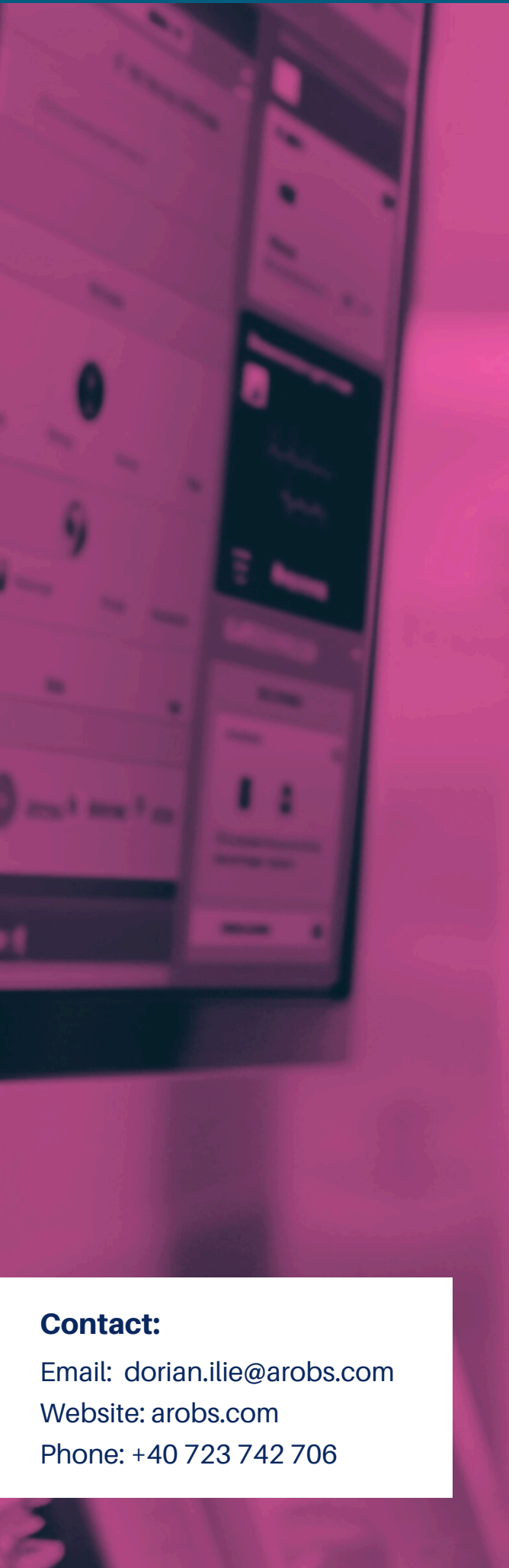
Tailor solutions to meet unique lab requirements, enhancing both performance and user experience.

Scalable Infrastructure

Grow seamlessly across labs, geographies, and projects to keep pace with rapid market demands.

Agentic AI Readiness

Our expanding PaaS framework supports advanced AI components, enabling innovators to develop and validate regulated, autonomous solutions without compromising on compliance or safety.



Platform Highlights

- ✔ **Advanced Data Analytics**
Gain actionable insights through integrated data processing and reporting tools.
- ✔ **Easy IoT Device Integration**
Connect and manage diverse lab instruments on a single platform.
- ✔ **Enhanced Collaboration**
Enable effortless data sharing among teams, fostering innovation and streamlined workflows.

AROBS Highlights

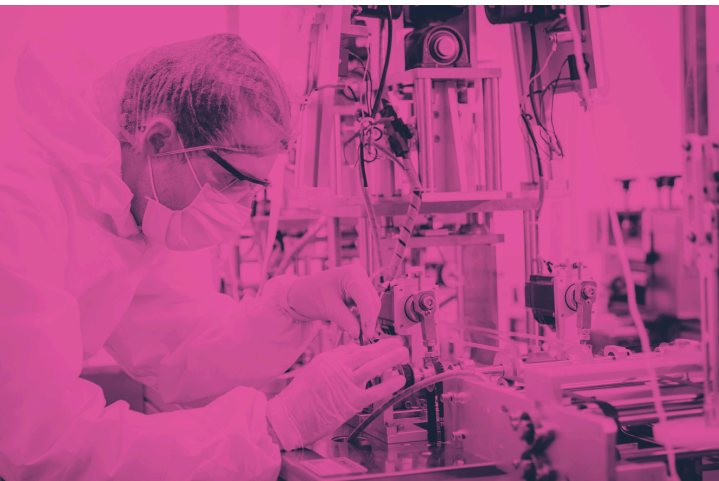
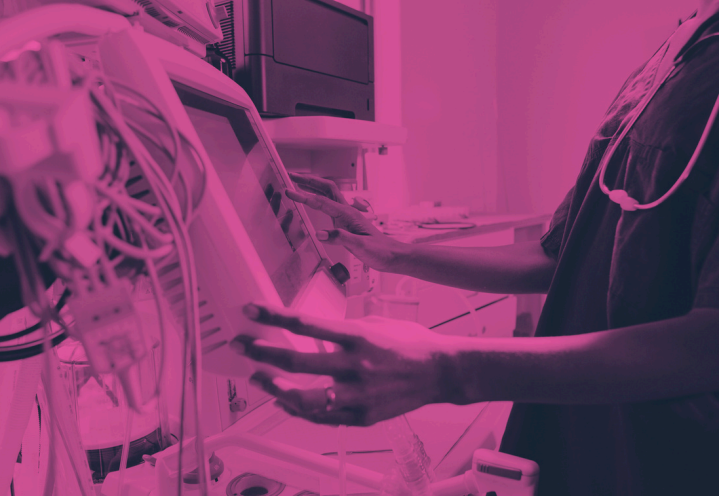
- ✔ **Extensive Lab Automation Expertise**
Skilled in implementing software solutions that optimize laboratory.
- ✔ **Laboratory Workflow Optimization**
Proven experience in enhancing lab processes through software-driven automation and data management.
- ✔ **Automated Liquid Handling Support**
Ensures precise and reliable liquid handling integration to enhance lab efficiency and accuracy.
- ✔ **Compliance-Ready Solutions**
ISO 9001:2015 - certified, ensuring regulatory adherence and reliable, scalable operations.

Contact:

Email: dorian.ilie@arobs.com

Website: arobs.com

Phone: +40 723 742 706



Building the Lab of the Future

Modular Architecture for Scalable Laboratory Solutions

Efficiency Redefined

Up to 90% Lower Development Costs
Out-of-the-box solutions reduce R&D expenses significantly.

Up to 80% Faster Time to Market
Accelerated deployment with proven frameworks and tools

Custom Solutions for Lab Systems

Develop
Rapidly prototype with real-time data integration and built-in compliance.

Validate
Test and optimize lab devices in a fully compliant, real-world environment.

Up to 90% Lower Support Costs
Simplify maintenance with robust, scalable infrastructure.

Deploy
Scale connected systems confidently, leveraging a secure and adaptable infrastructure.

Empower Innovation
Tailored implementation services address complex automation challenges.

Collaborative Excellence

KeborMed and **AROBS** combine a platform built for innovation with expertise in seamless implementation. This partnership offers:

- **End-to-End Support:** From initial concept to full deployment, every step is backed by industry expertise.
- **Custom Integrations:** Solutions tailored for unique workflows and specialized needs.
- **Regulatory Confidence:** Global standards compliance to meet the demands of medical and lab markets.

Why Choose This Solution?

- ✓ **Integrated Expertise**
A seamless blend of robust platform capabilities and proven implementation.
- ✓ **Future-Ready Innovations**
Flexible, sustainable solutions that keep labs at the forefront of technology.
- ✓ **Proven Performance**
Benefit from a track record of success and dependable frameworks.





KeborMed

berg
SOFTWARE SINCE 1991

AROBS
Transilvania Software

Unlock the potential of connected laboratory solutions. Contact our team today to learn how this collaboration can elevate your lab's capabilities.

Contact:

Email:

dorian.ilie@arobs.com

Website: arobs.com

Phone: +40 723 742 706